

THIS.

IS.

SID 5.

Product Brochure.

Centralised. Control Loop. Monitoring.

Meet SID 5.

Smart. Industrial. Diagnostics.

SID 5 is a powerful diagnostics software solution that **detects wear and tear** on machines by continuously **monitoring control loop behaviour**.

With **no cloud connection** or **additional sensors required**, it passively gathers data from the network using OPC-UA / MQTT to deliver real-time insights into performance and instant detection of unwanted events.

With SID 5, you **control your processes**, **reduce downtime**, and **increase efficiency** keeping your entire operations running at peak performance.

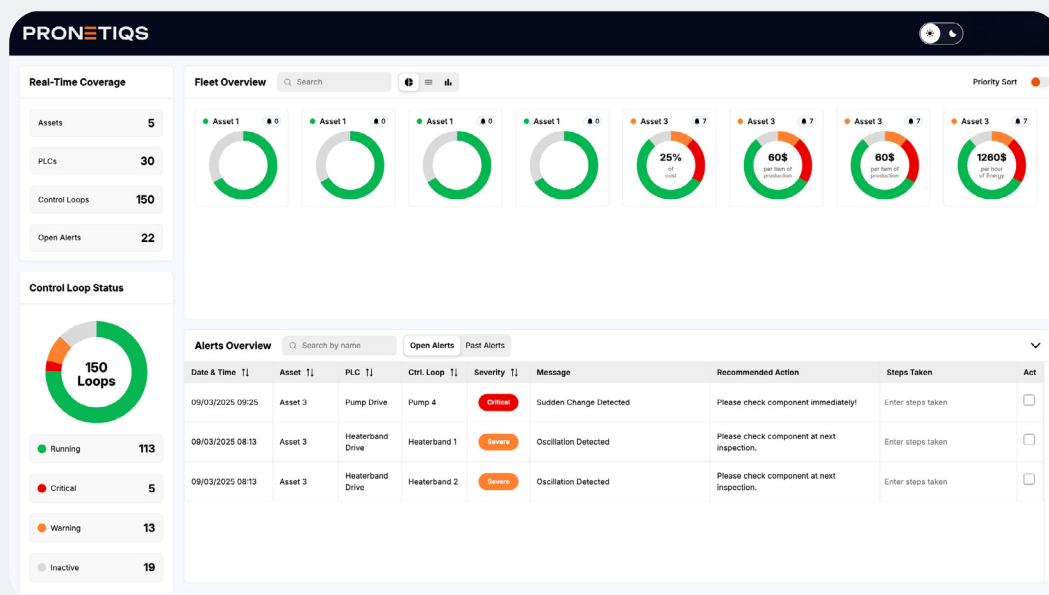
- No cloud connection required.
- No additional sensors required.
- No raw data storage or large data sets.



Everything you need to know.

SID 5 delivers you a complete overview of your operations via a unified dashboard, designed for clarity and insights into live data. This provides you diagnostics data from all monitored machines. Easily track the status of your machines and their associated control loops, detecting inconsistencies or deviations that lead to costly downtime.

The Dashboard displays each machine with detailed and live information on the number of associated control loops, each loop status and active alerts. With active notifications at all time, the level of transparency and responsiveness support quick decision-making, helping you to maintain high operational reliability and keep your production running smoothly.

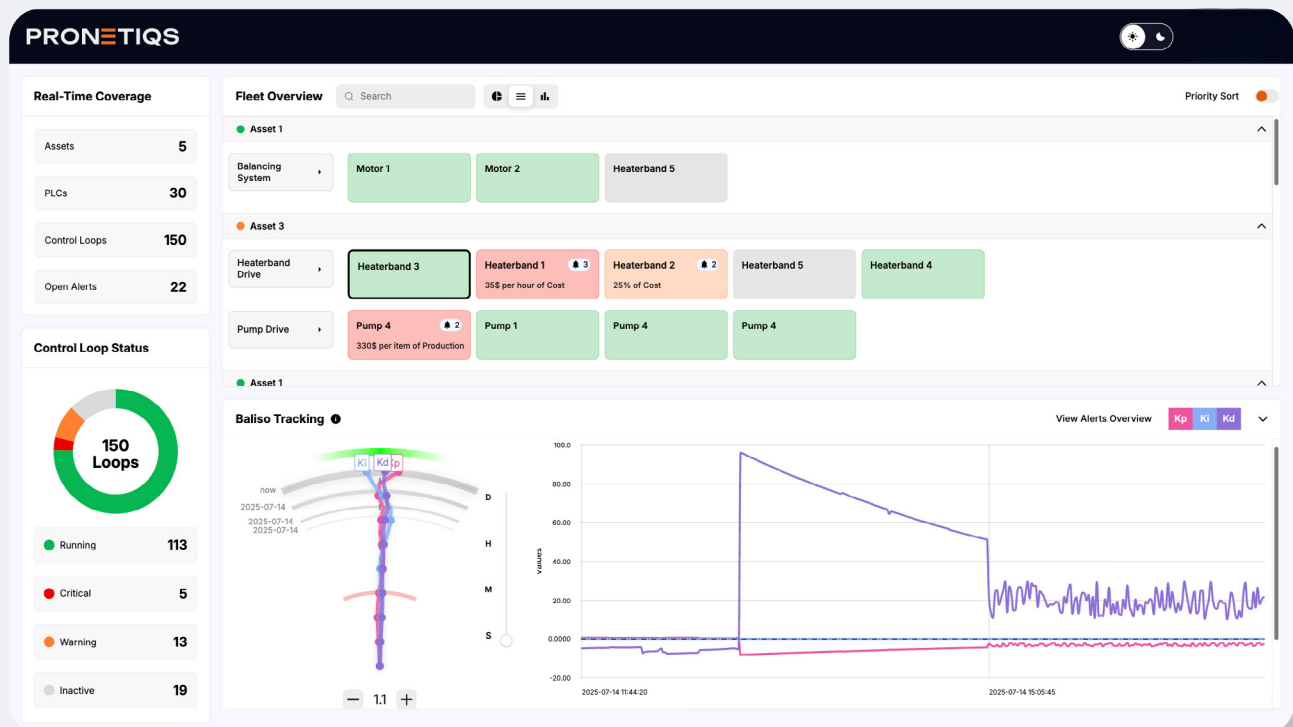


- Loop status overview for all monitored machines across your factory.
- Ability to view each machine and its associated control loops, with direct access to detailed tracking information.
- View the number of alerts, per machine, add estimated cost of failure, and prioritize.
- Create reports for a high-level summary of all the critical information in your factory.
- A full diagnostics hub for your entire factory at entry-level prices.

The Baliso Graph.

The Baliso Graph has specifically been developed for the SID family to simply visualise any changes detected within the monitored control loops. In an intuitive and easy- to-understand way, the graph displays live data points gathered representing changes to the control loop gains over time.

Since error and fault margins differ by industry, you can adjust graph settings based on your industry standards, ensuring insights that truly fit your operations without overloading your alarms.



Create Reports.

The SID 5 reporting function delivers actionable insights into your facility's performance, consolidated into three comprehensive report modules designed to uncover issues, trends, and performance gaps.

Asset Alert Summary

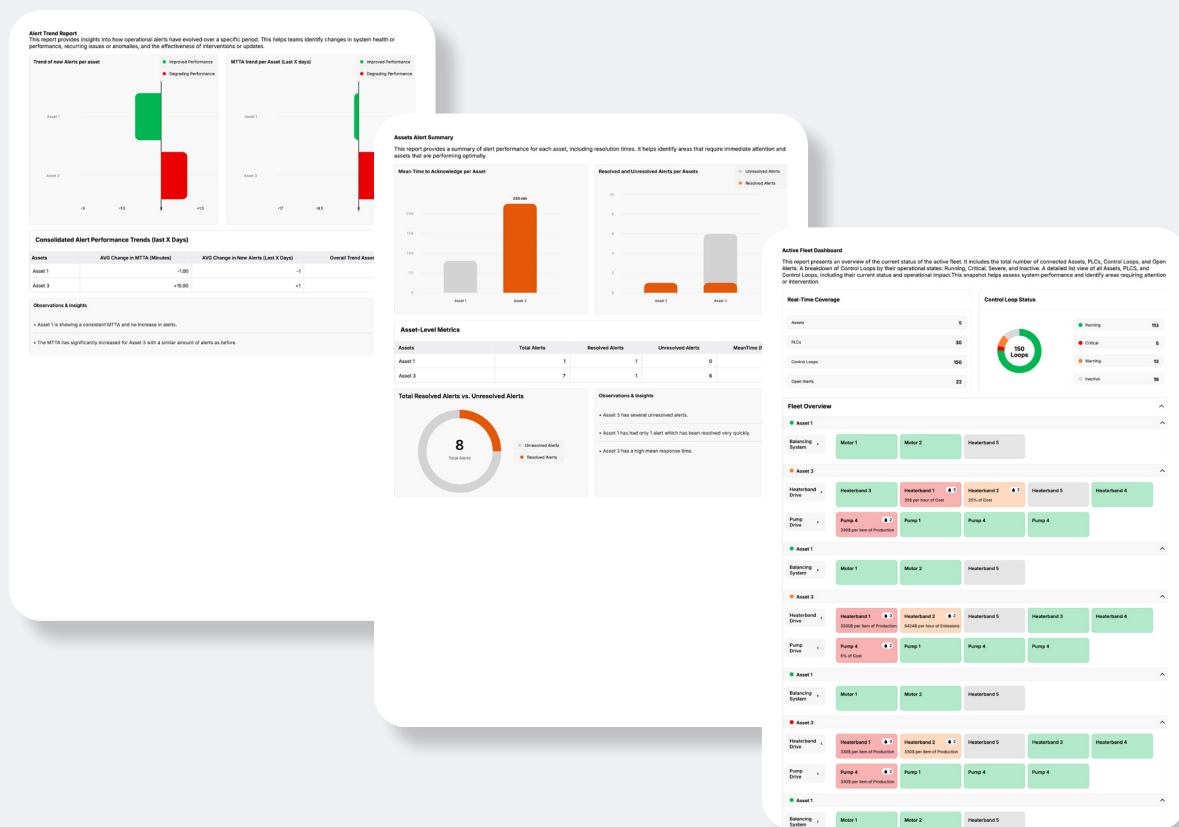
Get a clear overview of all active and resolved alerts. This report puts equipment issues in focus, giving you instant awareness of what needs immediate attention.

Alert Trend Report

This timeline-based report visualizes alert frequency over time, revealing patterns, recurring issues, and operational blind spots. It's packed with detailed insights and observations to help you stay ahead.

Fleet Report

See the big picture. This high-level report covers all monitored machines, pinpointing which machines and control loops are underperforming. It empowers you to prioritize maintenance with precision and make smarter decisions faster.



Setting up your machines.

Once you’ve identified the machines you want to monitor in your factory, SID 5 provides an easy and intuitive way to set up your control loops. You can choose the number of loops to be monitored per machine and adjust them at any time to match your operational needs.

Within minutes of setup, SID 5 gives you a complete view of your monitored assets, control loops, and active alerts - delivering immediate value.

You can also define the cost impact and course of action for a potential malfunction by entering the estimated cost per event and outlining the appropriate response.

This gives you clear insight into how each machine affects overall operational costs and helps you plan smarter, more effective maintenance strategies.

PRONETIQS

Real-Time Coverage

Assets

5

PLCs

30

Control Loops

150

Open Alerts

22

Control Loop Status

150 Loops

Running

113

Critical

5

Warning

13

Inactive

19

Configure

Search By Name

ImportExportDelete

	Assets Name	PLC	IP	Port	Licensed Loops	Active Loops	Impact due to imbalance or malfunction			
<input type="checkbox"/>	Asset 1	Pump Drive	192.168.1.10	8001	<div>-16+</div>	10	1000	\$ per event	of	Cost
<input type="checkbox"/>	Asset 1	Heating Module	192.168.1.10	8002	<div>-26+</div>	20	1000	\$ per event	of	Cost
<input type="checkbox"/>	Asset 3	Motor Centre	192.168.1.11	8001	<div>-15+</div>	15	1000	\$ per event	of	Cost
<input type="checkbox"/>	Asset 1	Pump Drive	192.168.1.10	8001	<div>-12+</div>	10	1000	\$ per event	of	Cost
<input type="checkbox"/>	Asset 1	Heating Module	192.168.1.10	8002	<div>-23+</div>	20	1000	\$ per event	of	Cost
<input type="checkbox"/>	Asset 3	Motor Centre	192.168.1.11	8001	<div>-20+</div>	15	1000	\$ per event	of	Cost
<div>+ Add Asset</div>										

DistributeSave

License Management

Add License Key

Q0JFNDIxNDc0RDQ5NDIDOUJFOTQ2OUJGRENGOTA1QJ8MjAyNi0wNy0wOSAwM

Save

Unassigned Control Loop Licenses

23 of 150

Expiration Date

2024-12-03 | ~ Days Left

Who are we?

Pronetiqs is a software development and expertise powerhouse, specialising in diagnostics solutions to monitor internal control loop behaviours within industrial machines and processes. Its intuitive approach enables predictive maintenance, minimization of downtime and optimisation of operational efficiency at low costs.

Additionally, as a certified PITC and PICC, Pronetiqs offers network support, consultancy services and trainings with more than 50 years of industry experience providing solutions to enhance connectivity, reliability and system integration.

Would you like to discover how we can optimize your business processes? Get in touch with us today!

PRONETIQS
Schiekade 189
3013 BR, Rotterdam
Netherlands

info@pronetiqs.com
pronetiqs.com

Follow us

